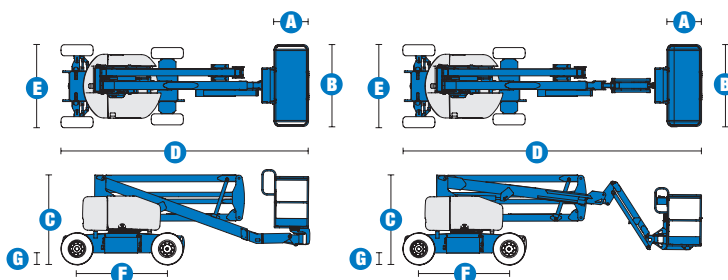


## Specifications



MODELS	Z™-45/25 DC & Bi		Z™-45/25J DC & Bi	
MEASUREMENTS	Metric	US	Metric	US
Working height maximum*	15.87 m	52 ft 1 in	15.94 m	52 ft 3 in
Platform height maximum	13.87 m	45 ft 6 in	13.94 m	45 ft 8 in
Horizontal reach maximum	7.62 m	25 ft	7.65 m	25 ft 1 in
Up-and-over clearance maximum	7.04 m	23 ft 1 in	7.24 m	23 ft 8 in
<b>A</b> Platform length	76 cm	2 ft 6 in	76 cm	2 ft 6 in
<b>B</b> Platform width	1.83 m	6 ft	1.83 m	6 ft
<b>C</b> Height - stowed	2 m	6 ft 7 in	2 m	6 ft 7 in
<b>D</b> Length - stowed	5.56 m	18 ft 3 in	6.83 m	22 ft 5 ft
<b>E</b> Width	1.79 m	5 ft 10.5 in	1.79 m	5 ft 10.5 in
<b>F</b> Wheelbase	2.03 m	6 ft 8 in	2.03 m	6 ft 8 in
<b>G</b> Ground clearance - centre	24 cm	9.5 in	24 cm	9.5 in

### PRODUCTIVITY

Lift capacity	227 kg	500 lbs	227 kg	500 lbs
Platform rotation	180°	180°	160°	160°
Vertical jib rotation	---	---	135°	135°
Turntable rotation	355° non-continuous		355° non-continuous	
Turntable tailswing	zero	zero	zero	zero
Drive speed - stowed	4.8 km/h	3.0 mph	4.8 km/h	3.0 mph
Drive speed - raised **	1.1 km/h	0.68 mph	1.1 km/h	0.68 mph
Gradeability - stowed***	30%	30%	30%	30%
Turning radius - inside	1.83 m	6 ft	1.83 m	6 ft
Turning radius - outside	4.26 m	14 ft	4.26 m	14 ft
Controls	24 V DC proportional		24 V DC proportional	
Tyres (foam filled)	23 x 37 cm	9 x 14.5 in	23 x 37 cm	9 X 14.5 in

### POWER

Power source - DC	48 V DC (eight 6 V batteries, 350 Ah capacity)			
Power source - Bi-Energy	48 V DC (eight 6 V batteries, 350 Ah capacity) with Kubota 12 hp (8.9 kW) diesel driven alternator			
Auxiliary power unit	24 V DC	24 V DC	24 V DC	24 V DC
Hydraulic tank capacity	30.3 L	8 gal	30.3 L	8 gal
Fuel tank capacity	34.1 L	9 gal	34.1 L	9 gal

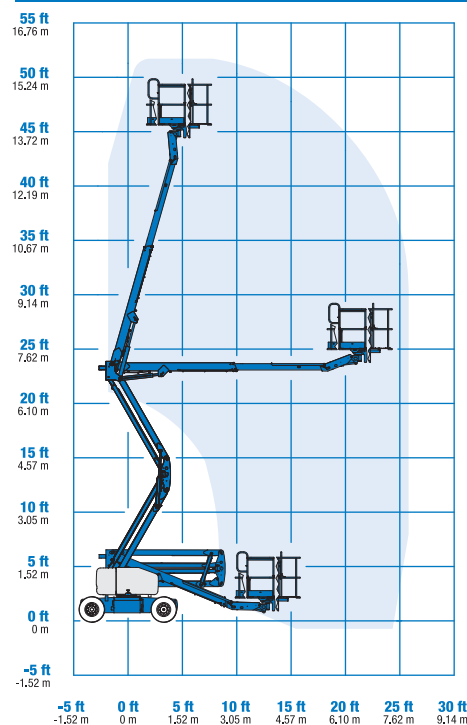
### WEIGHT\*\*\*\*

CE DC (foam filled tyres)	7,310 kg	16,116 lbs	7,741 kg	17,066 lbs
CE Bi-energy (foam filled tyres)	7,537 kg	16,616 lbs	7,967 kg	17,564 lbs

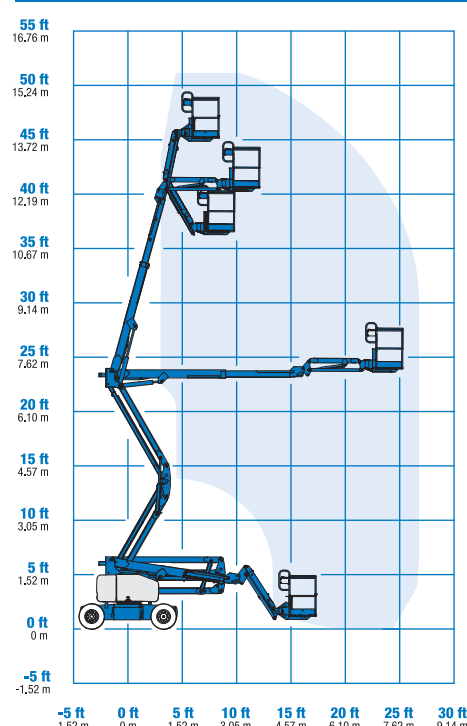
### STANDARDS COMPLIANCE

CE EN280, PB-10-611-03

### RANGE OF MOTION Z™-45/25



### RANGE OF MOTION Z™-45/25J



\* The metric equivalent of working height adds 2 m to platform height. U.S. adds 6 ft to platform height.

\*\* In lift mode (platform raised), the machine is designed to operate on firm, level surfaces only.

\*\*\* Gradeability applies to driving on slopes. See operator's manual for details regarding slope ratings.

\*\*\*\* Weight will vary depending on options and/or country standards.

## Features

### EASILY CONFIGURED TO MEET YOUR NEEDS

#### PLATFORM OPTIONS

- Steel 1.83 m (6 ft) (standard)
- Steel 1.22 m or 1.52 m (4 ft or 5 ft)
- 1.83 m (6 ft) tri-entry steel platform (option)

#### JIB OPTIONS

- Non-jib
- Articulating 1.52 m (5 ft) jib boom

#### POWER

- 48 V DC (eight 6 V 350 Ah batteries)

#### BATTERY CHARGING OPTIONS

- 25 Amp 48 V onboard charger
- Onboard alternator powered by Kubota diesel 8.9 kW (12 hp) engine

#### TYRE OPTIONS

- Industrial foam-filled (standard)
- Industrial air
- Industrial non-marking air or foam-filled

### STANDARD FEATURES

#### MEASUREMENTS

##### Z™-45/25

- 15.87 m (52 ft 1 in) working height
- 7.62 m (25 ft) horizontal reach
- 7.04 m (23 ft 1 in) up-and-over clearance
- Up to 227 kg (500 lb) lift capacity

##### Z™-45/25J

- 15.94 m (52 ft 3 in) working height
- 7.65 m (25 ft 1 in) horizontal reach
- 6.73 m (22 ft 1 in) up-and-over clearance
- Up to 227 kg (500 lb) lift capacity

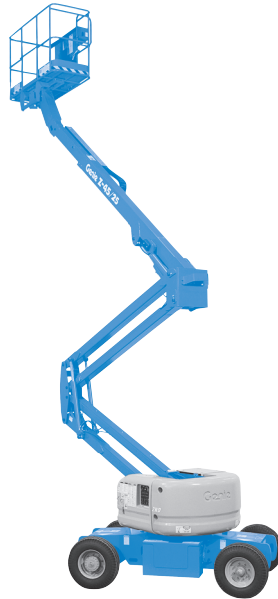
#### PRODUCTIVITY

- Self-levelling platform
- Hydraulic platform rotation
- Fully proportional controls
- Thumb rocker steer
- Drive enable
- AC power to platform
- Horn
- Hour meter
- Tilt alarm
- 355° non-continuous turntable rotation
- Zero tailswing
- Certified load sensor

### STANDARD FEATURES

#### POWER

- 48 V DC deep cycle battery pack
- 24 V DC auxiliary power
- Battery charge indicator - BCI (Bi-energy only)



### OPTIONS & ACCESSORIES

#### PRODUCTIVITY

- Platform swing gate
- Half-mesh platform inserts with swing gate
- Platform top auxiliary rail
- Air line to platform
- Fire resistant hydraulic oil
- Biodegradable hydraulic oil
- Aircraft protection package\*
- Tool tray
- Fluorescent tube caddy
- Pipe cradle (pair)
- Alarm package (flashing beacon and travel alarm)
- Platform works lights
- Lockable platform control box covers
- Tow package

#### POWER

- Battery charge indicator - BCI (DC only)
- Low voltage interrupt with BCI
- Inverter (DC only)

#### UK

The Maltings  
Wharf Road  
Grantham NG31 6BH  
UK  
Tel: +44 (0)1476 584333  
Fax: +44 (0)1476 584334

#### France

10, ZA de la Croix St. Mathieu  
28320 Gallardon  
France  
Tel: +33 (0)2 37 26 09 99  
Fax: +33 (0)2 37 26 09 98

#### Germany

Finienweg 3  
28832 Achim/Bremen  
Germany  
Tel: +49 (0)4202 8852-0  
Fax: +49 (0)4202 8852-25

#### Spain

Gaià 31, Pol. Ind. Plá d'en Coll  
08110 Montcada i Reixac  
Barcelona  
Spain  
Tel: +34 93 572 50 90  
Fax: +34 93 572 50 91

#### Scandinavia

Aröds industriväg 34  
422 43 Hisings Backa  
Sweden  
Tel: +46 31 57 51 00  
Fax: +46 31 57 51 04

#### Middle East

Terex Middle East  
PO Box 282325, Dubai  
U.A.E.  
Tel: +971 4 885 8030  
Fax: +971 4 885 6364  
Email: awp.infome@terex.com

#### Genie United States

18340 NE 76th Street  
P.O. Box 97030  
Redmond, WA  
USA 98073-9730  
Tel: +1 425 881-1800  
Fax: +1 425 883-3475

**Email:** AWP-InfoEurope@terex.com

#### Distributed By:

\* Reduces platform capacity to 200 kg (440 lbs)

Effective date: June, 2009. Product specifications and prices are subject to change without notice or obligation. The photographs and/or drawings in this document are for illustrative purposes only. Refer to the appropriate Operator's Manual for instructions on the proper use of this equipment. Failure to follow the appropriate Operator's Manual when using our equipment or to otherwise act irresponsibly may result in serious injury or death. The only warranty applicable to our equipment is the standard written warranty applicable to the particular product and sale and we make no other warranty, expressed or implied. Products and services listed may be trademarks, service marks or trade-names of Terex Corporation, Genie Industries, Inc. and/or their subsidiaries in the U.S.A. and many other countries. All rights are reserved. Terex is a Registered Trademark of Terex Corporation in the U.S.A. and many other countries. Genie is a Registered Trademark of Genie Industries, Inc in the U.S.A. and many other countries. Genie is a Terex Company. Copyright 2009 Terex Corporation