

BRONTO SKYLIFT S 70 XDT



IDEAL FOR

- Construction sector
- Window cleaning
- Bill posting
- Decommissioning of buildings
- Wind farms

SPECIFICATIONS

Specification	Metric	Imperial
Working Height	70.00m	229ft 8in
Platform Height	68.00m	223ft 1in
Working Outreach @280kg SWL	33.50m	109ft 11in
Working Outreach @600kg SWL	30.50m	100ft 1in
Slew	+/- 280°	
Width	Travelling	2.50m / 8ft 2in
	Working	2.80m - 8.00m / 9ft 2in - 26ft 3in
Height (stowed)	4.00m	13ft 2in
Length	12.30m	40ft 4in
Gross Vehicle Weight	35,000kg	77,175lb
Platform Capacity	600kg	1,322lb
Platform Size (Extendable)	2.50m - 3.70m x 1.05m	8ft 3in - 12ft 2in x 3ft 5in
	0.95m x 0.75m x 0.05m	37in x 30in x 2in

FLOOR LOADINGS

Surface	Metric	Imperial
Maximum Outrigger Pressure	14kg/cm2 or 1373kN/m2	28670lb/ft2
Max. Ground Pressure using Outrigger Spreader Pad	3.50kg/cm2 or 343.20kN/m2	7169lb/ft2

70m

CASE STUDY

NATURE OF JOB:
Blade maintenance on wind turbine.

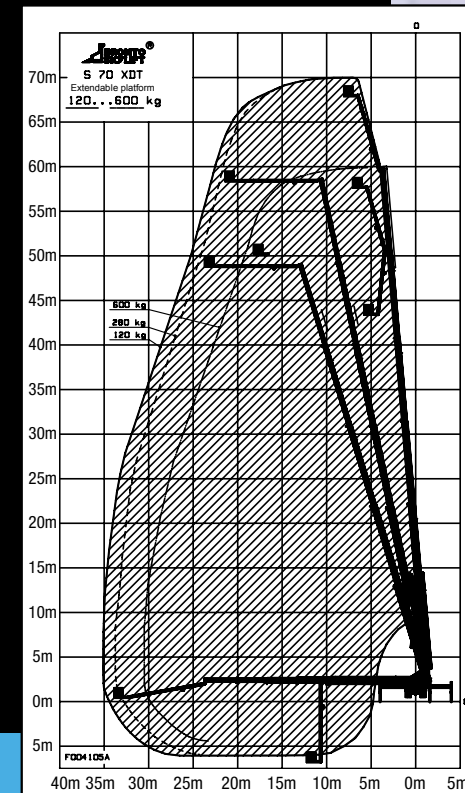
REASON FOR CHOOSING THIS MACHINE:
High working height, large platform capacity and extendable platform, expert operator.

CHALLENGE:
Technicians needed to carry out blade maintenance at heights up to 58m.

EQUIPMENT:
Bronto S 70XDT

SOLUTION

Blade Technicians had to access all three blades on a single turbine in one day to carry out repairs and maintenance at working heights of up to 58m. Our skilled operator used the Bronto S 70 XDT to position the blade technicians at varying heights around each blade to carry out the repairs and maintenance work, safely and effectively.



The quick and easy set up of the truck mount, along with the skill of the operator, allowed the technicians to inspect and repair all three blades on the turbine in one day, minimising the lost production for the turbine owner.

BRONTO SKYLIFT S 70 XDT

